

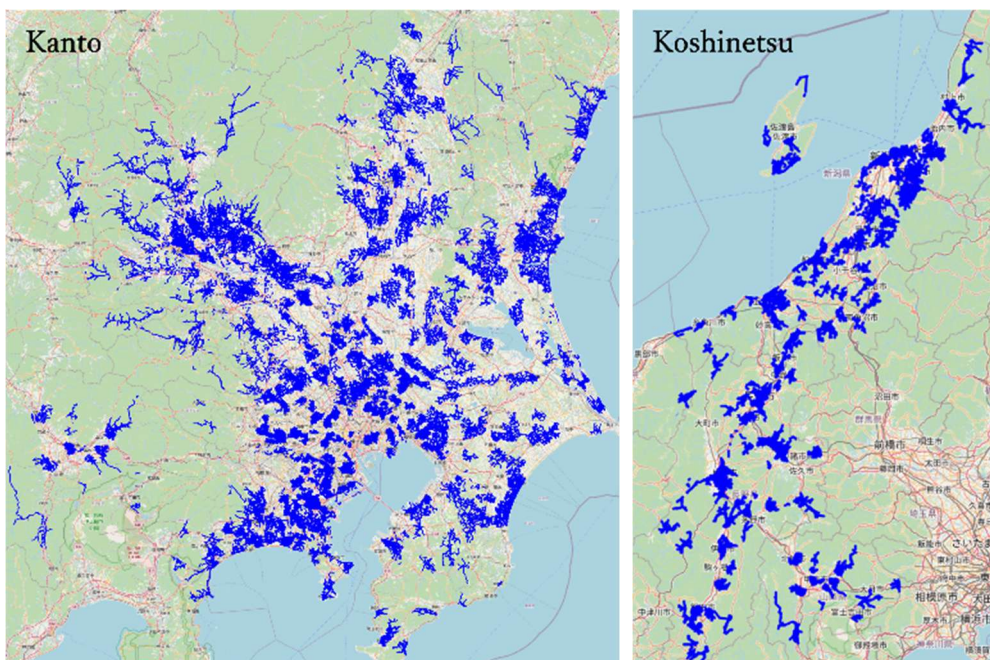


December 1, 2025
NTT-ME CORPORATION
Dynamic Map Platform Co., Ltd.

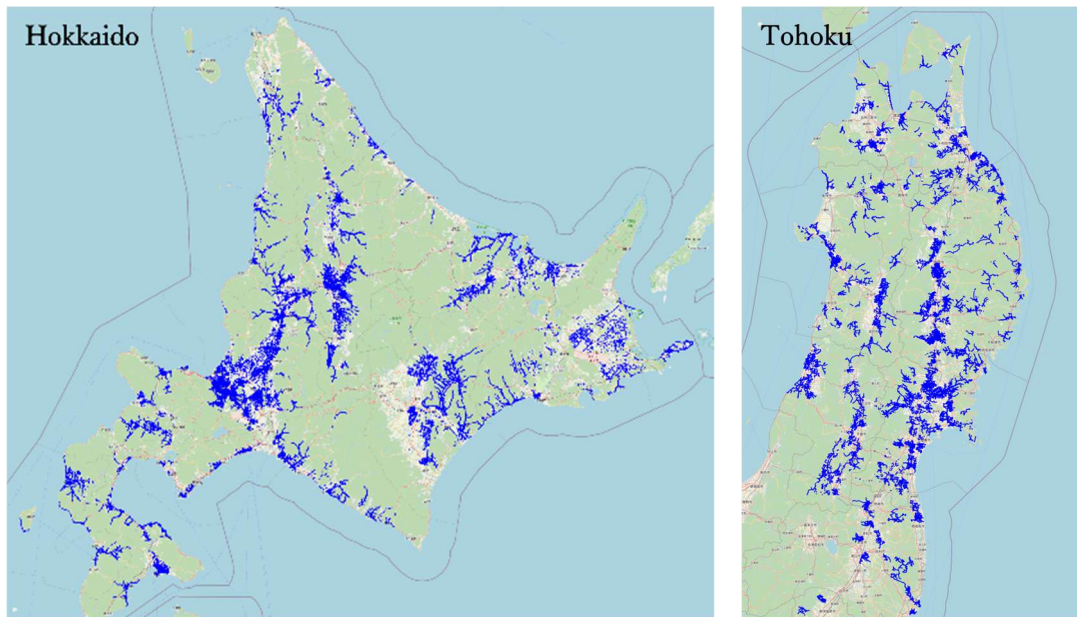
NTT-ME and Dynamic Map Platform Partner on Point Cloud Data Sharing ~Expanding the Platform Supporting Social Infrastructure to Solve Regional Challenges~

NTT-ME CORPORATION (Head Office: Shinjuku-ku, Tokyo; President: Kei Ikeda; “NTT-ME”) and Dynamic Map Platform Co., Ltd. (Head Office: Shibuya-ku, Tokyo; CEO & President: Shuichi Yoshimura; “Dynamic Map Platform”) have announced a partnership aimed at utilizing NTT-ME’s point cloud data within Dynamic Map Platform’s 3D point cloud viewer, “3Dmapspocket®”, to contribute to solving regional challenges.

Dynamic Map Platform operates “3Dmapspocket®,” a web-based service that enables users to view and analyze point cloud data for expressways, automobile-only roads, and major arterial roads nationwide. The service supports social infrastructure through digital transformation (DX) across various industries, including infrastructure management and traffic accident investigations. Until now, “3Dmapspocket®” has only allowed users to view point cloud data acquired by Dynamic Map Platform. However, through this new partnership, NTT-ME will provide point cloud data acquired during its own facility inspections. This will enable the use of point cloud data with broader coverage, including public roads. This collaboration aims to expand use cases for existing users, facilitate expansion into new industries, and promote wider adoption of point cloud data in the market.



Expanded Coverage (Kanto and Koshinetsu Areas)



Expanded Coverage (Hokkaido and Tohoku Areas)

With its vision of “Modeling the Earth,” Dynamic Map Platform replicates the real world in a digital space and co-creates innovation across various industrial sectors. Meanwhile, NTT-ME aims to co-create a sustainable, locally-circulating society by leveraging its own assets. This collaboration was made possible by the alignment of both companies’ goals, and the two companies will promote initiatives that contribute to solving regional challenges.

Furthermore, moving forward, the companies will explore the development of additional solutions that integrate each company’s technologies and expertise, going beyond mere data sharing.

Dynamic Map Platform and NTT-ME will pool their respective insights to drive digital innovation and promote digital transformation (DX) across various industries.

<About Dynamic Map Platform Co., Ltd. >

Dynamic Map Platform was established with the backing of the Japanese government and investment from 10 Japanese automobile manufacturers and other enterprises. Headquartered in Japan, and we also have bases in North America, Europe, the Middle East, and South Korea, currently operating in 26 countries. We provide high-precision 3D data for a wide range of applications, including autonomous driving (AD), Advanced Driver Assistance Systems (ADAS), simulator environment construction, infrastructure management, and snow removal support.

With our vision of “Modeling the Earth”—digitizing the planet—we co-create innovation across diverse industries as a platform provider for high-precision 3D data.

Established: June 2016

Headquarters: Shibuya-ku, Tokyo

Representative: YOSHIMURA Shuichi

Business: Providing high-precision 3D data for a variety of industries, including automated driving and ADAS.

URL: <https://www.dynamic-maps.co.jp/en/>