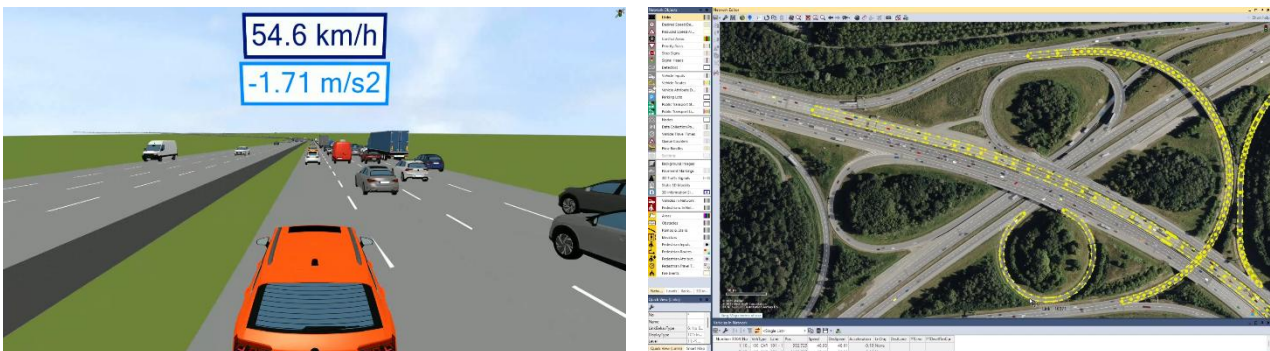


## High-Precision 3D Data from the Dynamic Map Platform is now available globally through Model2Go for PTV Vissim

Dynamic Map Platform Co., Ltd. (Head Office: Shibuya-ku, Tokyo; CEO & President: Shuichi Yoshimura; “DMP”) is pleased to announce that DMP’s High-Precision 3D Data is now globally available for use in traffic simulation through Model2Go for PTV Vissim (“the product”), newly released by PTV Group (Headquarters: Karlsruhe, Germany; CEO: Christian U. Haas; “PTV”), part of Umovity. This announcement was made during “ITS World Congress 2025” held from August 24 (Sun) to 28 (Thu), 2025, in Atlanta, Georgia, USA.



Simulation image in PTV Vissim

DMP and PTV have signed a Memorandum of Understanding (MOU) in January 2025 for the development of simulation technology in the fields of automotive and transportation engineering and its applications. The announcement made today represents the outcome of this collaboration.

To achieve accurate traffic simulation, it is essential to build precise and realistic road networks for simulators. However, manually creating such models requires a significant amount of time. The product leverages DMP's centimeter-level High-Precision 3D Data to automatically construct models that can be immediately utilized in PTV's microscopic-traffic simulator “PTV Vissim.” The product is available in PTV Vissim’s native file format INPX or in the automotive simulation standard network format OpenDRIVE and covers 20 countries, including the USA, Canada, the European Union, the UK, Japan, and South Korea. The product will contribute to improving the efficiency of traffic simulation work in the automotive and traffic engineering fields.

## 【Comments from company representatives】



### (left) Comment from Christian U. Haas, CEO of Umovity

PTV Vissim is the world's leading traffic simulation software, enabling data-driven mobility planning across the globe. By integrating DMP's high-precision 3D map data, we're now able to apply this powerful tool easier than ever. This break-through opens exciting new possibilities for both the automotive sector and traffic engineering.

### (right) Comment from Shuichi Yoshimura, CEO & President of DMP

Since signing the MOU with PTV in January, we've worked closely to make our high-precision 3D map data available for traffic simulation, and we are pleased to announce that PTV will serve as our distributor. We are excited about the prospect of our world's largest 3D data set, covering a total of approximately 1.8 million kilometers worldwide, being globally utilized in traffic simulation. We believe this will simplify simulation efforts and contribute to smarter city planning and next-generation vehicle development.

As a high-precision 3D data platform provider, DMP will continue to collaborate with a wide range of industries and contribute to global innovation in various industrial fields.

#### **<About PTV Group – part of Umovity>**

PTV Group is a leading global software company for traffic planning, simulation, and real-time management. With more than 40 years of experience in the fields of mobility, the Germany-based company provides software products based on proprietary algorithms ranging from microscopic and macroscopic modeling and simulation of traffic to real-time traffic management, benefiting more than 2,900 cities and municipalities. Bridgepoint acquired a majority stake in the company in January 2022 in order to further accelerate its growth together with shareholder Porsche Automobil Holding SE. Since 2023 PTV Group and Econolite are united under the brand Umovity.

#### **<About Dynamic Map Platform, Inc.>**

Dynamic Map Platform was established with the backing of the Japanese government and investment from 10 Japanese automobile manufacturers and other enterprises. The company's headquarters is located in Japan, and it also has bases in North America, Europe, the Middle East, and South Korea; it is expanding its business in 26 countries.

As a High-Precision 3D Data platform that replicates the real world in a digital space, Dynamic Map Platform supports innovation in various industries.

Established: June 2016

Headquarters: Shibuya-ku, Tokyo

Representative: YOSHIMURA Shuichi

Business: Providing high-precision 3D data for a variety of industries, including automated driving and ADAS.

URL: <https://www.dynamic-maps.co.jp/>