



July 23, 2025

Dynamic Map Platform Europe, GmbH

### (Notices) Dynamic Map Platform and Terrasolid Launch Webinar Series

~Presenting New Possibilities for Value Creation through Smarter Infrastructure Management Using High-Precision 3D Data~

Dynamic Map Platform Co., Ltd. (Head Office: Shibuya-ku, Tokyo; CEO & President: Shuichi Yoshimura; "Dynamic Map Platform") and its group company, Dynamic Map Platform Europe, GmbH ("DMP EU"), held the first session of a joint webinar series on July 9 in collaboration with Terrasolid Oy (Head Office: Helsinki, Finland; CTO: Arttu Soininen; "Terrasolid"), a global provider of point cloud processing software.

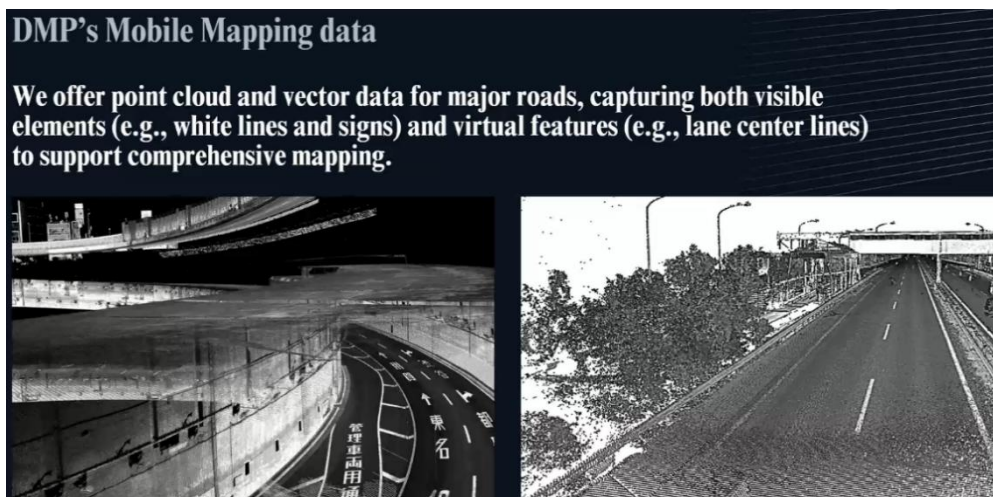


(from top) J.Yamashita, Data Solution Sec. Manager Dynamic Map Platform,  
H.D.Kato Sales DMP EU、 A.Soininen CTO Terrasolid

In April 2025, Dynamic Map Platform and Terrasolid entered into a partnership with the aim of enabling more advanced and efficient operations in the infrastructure sector by combining Dynamic Map Platform's high-precision, wide-ranging 3D data with Terrasolid's global user base to provide an environment that facilitates the use of High-Precision 3D Data. This webinar marked the first opportunity to widely introduce the value created through our collaboration.

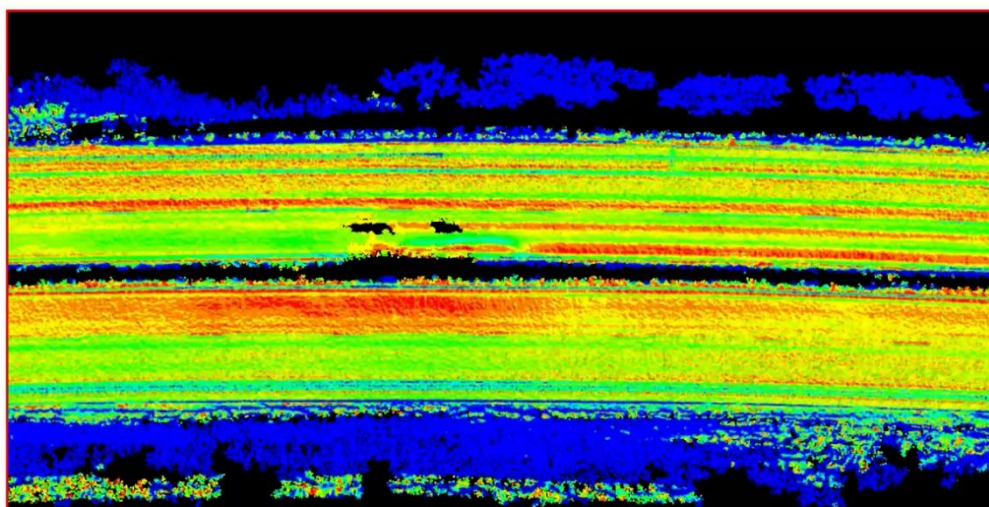
To accommodate different time zones, the webinar was held twice—once at 5:00 PM and again at 11:00 PM JST. Under the theme *"Unlocking New Horizons with Readily Available Point Cloud Data from Dynamic Map Platform,"* we introduced the features and potential applications of the global High-

Precision 3D Data provided by Dynamic Map Platform. In addition, we presented actual use cases from our collaboration with Terrasolid, targeting participants—primarily Terrasolid users. Through the webinar, we illustrated concrete examples of solutions that could be realized through our future collaboration.



**Use Cases of Dynamic Map Platform's High-Precision 3D Data**  
(Comprehensively supporting the mapping of major roads)

### **Surface Normals – Waterflow Issues**



**Use Cases of Our Data in Terrasolid Software**  
(Color-coded road slopes visualizing water flow conditions)

Approximately 180 industry professionals from around the world participated in this webinar. The participants came from a wide range of fields, including road asset management, road administration, infrastructure planning, and engineering consulting, demonstrating cross-industry interest in the utilization of Dynamic Map Platform's High-Precision 3D Data.

This webinar series will continue to be held regularly, with the next session scheduled for autumn 2025 or later. Through this webinar and various other channels of information sharing, Dynamic Map Platform and Terrasolid will continue to promote value creation across all industrial sectors related to

infrastructure.

For more details and background on the collaboration between Dynamic Map Platform and Terrasolid, please also refer to the following press release:

- April 24, 2025: MOU (Memorandum of Understanding) Signed with Terrasolid Oy ~Enhancing decision-making processes and enabling efficient management through the use of Point Cloud data and HD Maps  
<https://www.dynamic-maps.co.jp/en/news/mou-memorandum-of-understanding-signed-with-terrasolid-oy-enhancing-decision-making-processes-and-enabling-efficient-management-through-the-use-of-point-cloud-data-and-hd-maps/>

#### <About Terrasolid Oy>

Since its founding in 1989, Terrasolid Oy has been a software company that specializes in developing solutions for processing and analyzing geospatial data, particularly from LiDAR sensors. Their products are used in industries like surveying, engineering, and environmental science for tasks such as 3D mapping, terrain modeling, and data visualization. The company is well-regarded for its expertise in LiDAR data and its ability to produce high-quality results in geospatial analysis.

#### <About Dynamic Map Platform, Inc.>

Dynamic Map Platform was established with the backing of the Japanese government and investment from 10 Japanese automobile manufacturers and other enterprises. The company's headquarters is located in Japan, and it also has bases in North America, Europe, the Middle East, and South Korea; it is expanding its business in 26 countries.

As a High-Precision 3D Data platform that replicates the real world in a digital space, Dynamic Map Platform supports innovation in various industries.

Established: June 2016

Headquarters: Shibuya-ku, Tokyo

Representative: YOSHIMURA Shuichi

Business: Providing high-precision 3D data for a variety of industries, including automated driving and ADAS.

URL: <https://www.dynamic-maps.co.jp/>