



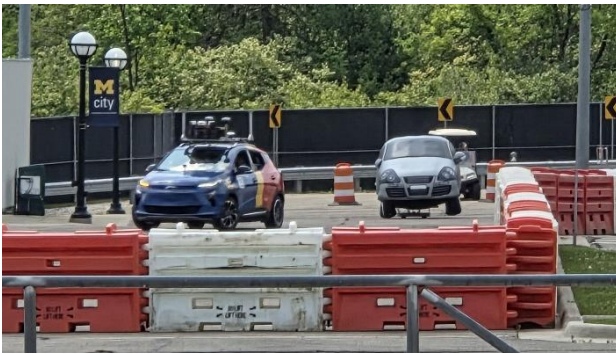
June 12, 2025

Dynamic Map Platform Co., Ltd.

Dynamic Map Platform North America, Inc.

**(Notices) Providing Data as an Official Supplier
at the Autonomous Driving Challenge Contest Organized by SAE International and GM**

Dynamic Map Platform North America, Inc., a group company of Dynamic Map Platform Co., Ltd. (Head Office: Shibuya-ku, Tokyo; CEO & President: Shuichi Yoshimura; "Dynamic Map Platform"), participated as an official supplier in AutoDrive Challenge™ II, an event organized by SAE International (the Society of Automotive Engineers; SAE) and General Motors (GM) held from June 1 to 7 at the University of Michigan's Mcity in Michigan, USA.



AutoDrive Challenge™ II

AutoDrive Challenge™ II is a contest for university students that aims to train next-generation automobile engineers. The participating teams develop autonomous driving systems for vehicles using components compliant with the standards provided by SAE, taking on various challenges along the way. The Dynamic Map Platform Group has been providing the 3D data used in the contest as an official supplier for four consecutive years since the event was first held in 2022.

The Dynamic Map Platform booth attracted approximately 200 visitors, including engineering students from the USA and Canada participating in the event and employees of sponsor companies, such as GM.

They showed interest in how Dynamic Map Platform's data is utilized in the autonomous driving systems of mass-produced vehicles and the latest trends in the autonomous driving vehicle market.

Through participating in events like this and interacting with various stakeholders, the Dynamic Map Platform Group will continue to contribute to the advancement of autonomous driving technologies and the training of automobile engineers.

<AutoDrive Challenge™ II Overview>

- Exhibition period Sunday, June 1 to Saturday, June 7, 2025
- Venue the University of Michigan's Mcity
- Host SAE International (the Society of Automotive Engineers)、General Motors (GM)

Official website: <https://www.sae.org/attend/student-events/autodrive-challenge-series2>

<About Dynamic Map Platform Co., Ltd.>

Dynamic Map Platform was established with the backing of the Japanese government and investment from 10 Japanese automobile manufacturers and other enterprises. The company's headquarters is located in Japan, and it also has bases in North America, Europe, the Middle East, and South Korea; it is expanding its business in 26 countries.

As a High-Precision 3D Data platform that replicates the real world in a digital space, Dynamic Map Platform supports innovation in various industries.

Established: June 2016

Headquarters: Shibuya-ku, Tokyo

Representative: YOSHIMURA Shuichi

Business: Providing high-precision 3D data for a variety of industries, including automated driving and ADAS.

URL: <https://www.dynamic-maps.co.jp/>