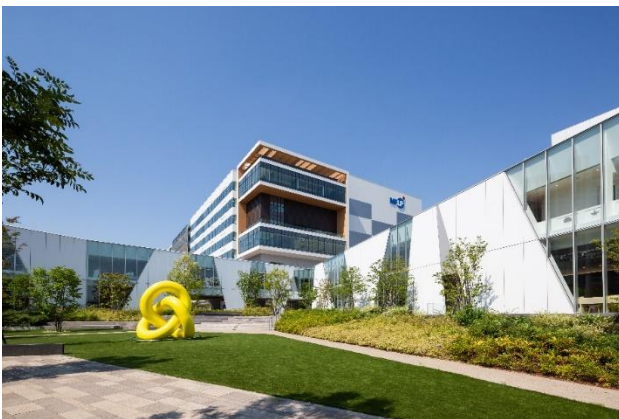
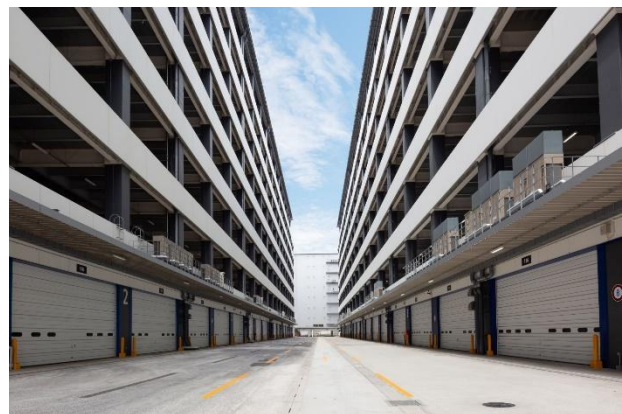


Dynamic Map Platform and Mitsui Fudosan sign MOU (basic agreement)**-Collaboration to achieve logistics automation with level 4 autonomous driving trucks through the use of dynamic maps-**

Dynamic Map Platform Co., Ltd. (Head office: Shibuya-ku, Tokyo; CEO & President: Shuichi Yoshimura; “Dynamic Map Platform”) has signed an MOU (basic agreement) with Mitsui Fudosan Co., Ltd. (Head office: Chuo-ku, Tokyo; President and Chief Executive Officer: Takashi Ueda; “Mitsui Fudosan”), aiming to promote optimization in logistics centers through the use of autonomous driving vehicles.



View of logistics center from outside
(MFLP Funabashi III)



View of vehicle route inside the logistics center
(MFLP Funabashi II/III)

The logistics industry faces the urgent social problem of a lack of truck drivers. To tackle this, organizations are promoting the introduction of autonomous driving trucks. Demonstrations of autonomous driving trucks on expressways have been carried out under government leadership, but consideration must be given to initiatives for autonomous driving in large logistics centers, which function as logistical nodes, to realize complete autonomy in logistics.

Dynamic Map Platform and Mitsui Fudosan aim to use their recent MOU to consider and implement services with the goal of automation in logistics centers using level 4*1 autonomous driving trucks. In this context, Dynamic Map Platform will create dynamic maps that connect information needed for logistics automation, here defined as High-Precision 3D Map Data (HD maps) that will enable level 4 autonomous driving trucks to run within logistics centers. The company will also build a dynamic map information linking system that will connect autonomous driving trucks and information from the logistics center's

operation management system in real time. This will contribute to the realization of logistics automation by enabling information provision so that level 4 autonomous driving trucks that have arrived at the logistics center can reach their assigned berth*², in addition to connecting operators within the center to the system. Field testing is expected to take place within a logistics center during FY2025.

*1 Autonomous driving level 4: The implementation of all autonomous driving system operations under specific conditions, such as location, weather, and/or speed.

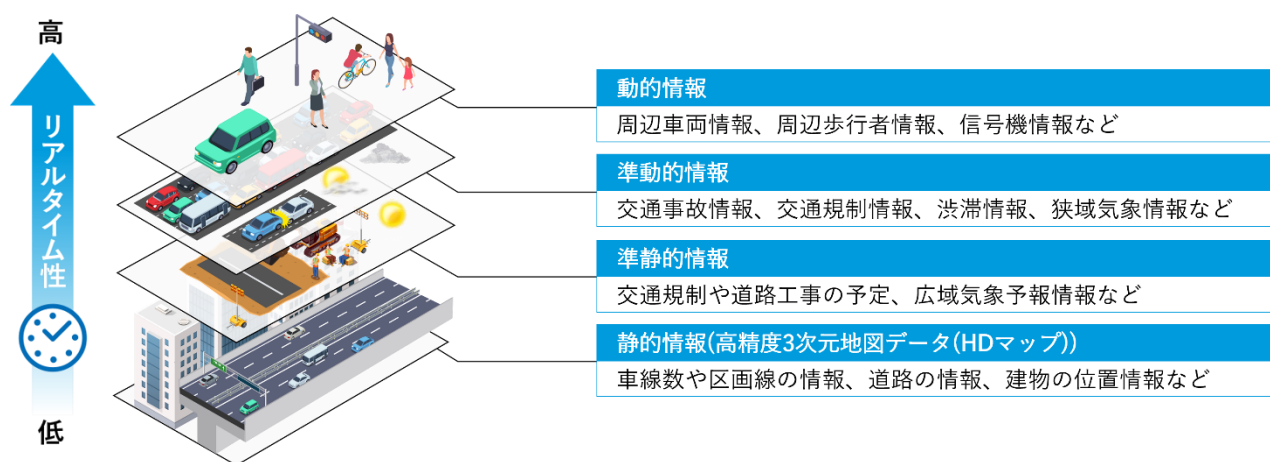
*2 Berth: A space where trucks stop to load and unload goods, etc.

Dynamic Map Platform's CEO & President Shuichi Yoshimura gave the following statement concerning the recent partnership: "There are limits to what we can achieve in logistics automation with autonomous driving trucks if the vehicle technology alone evolves. I believe we need to ensure mutual connections and integration between autonomous driving trucks and logistics center systems. I hope that close cooperation with people from different industries will create a future where this system is put to use in society: autonomous driving trucks will come and go seamlessly between logistics centers, and a variety of mobility services will seamlessly operate within these centers.

As a High-Precision 3D Data platform provider, Dynamic Map Platform will continue to promote cooperation with a wide range of industries and contribute to innovation in many different industrial fields.

About dynamic maps

"Dynamic maps" refers to the concept of a map database with information sorted into four levels in accordance with its real-time status. Dynamic Map Platform provides High-Precision 3D Map Data (HD maps) that is the foundation of "static information," encompassing information on vehicle lanes, road surfaces, and more.



About Mitsui Fudosan's logistics facility business

Mitsui Fudosan has been working to develop logistics facilities since April 2012. This has now expanded to 76 development facilities in Japan and overseas (Japan: 66; Overseas: 10) as part of its flagship brand, Mitsui Fudosan Logistics Park (MFLP). Using the mission statement "Connecting Values Together with Customers and Creating New Values Together with Customers," the company is taking on the challenge of connecting many different types of people, goods, and services and creating value that transcends existing frameworks as a problem-solving partner to its unit holders.

<https://www.mitsuifudosan.co.jp/>

About Dynamic Map Platform Co., Ltd.

Dynamic Map Platform was established with the backing of the Japanese government and investment from 10 Japanese automobile manufacturers and other enterprises. The company's headquarters are located in Japan, and it also has bases in North America, Europe, the Middle East, and South Korea; it is expanding its business in 26 countries.

As a High-Precision 3D Data platform that replicates the real world in a digital space, Dynamic Map Platform supports innovation in various industries.

Established: June 2016

Headquarters: Shibuya-ku, Tokyo

Representative: YOSHIMURA Shuichi

Business: Providing high-precision 3D data for a variety of industries, including automated driving and ADAS.

URL: <https://www.dynamic-maps.co.jp/en/index.html>